

GN 743.4 | Oil level sight glasses

Stainless steel



- 1
- 2
- 3
- 4
- 5
- 6
- 7
- 8
- 9
- 10
- 11
- 12
- 13
- 14
- 15
- 16
- 17
- 18

MATERIAL

AISI 303 stainless steel.

WINDOW

Natural glass for use with maximum continuous working temperature 100°C.

RING

NBR synthetic rubber flat packing ring for use with maximum continuous working temperature 100°C.

STANDARD EXECUTIONS

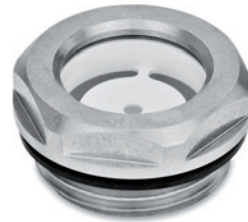
- **GN 743.4-A:** with reflector made out of technopolymer (PSU polysulfone), maximum continuous working temperature 100°C.
- **GN 743.4-B:** without reflector, with AISI 301 stainless steel seal ring, maximum continuous working temperature 100°C.

FEATURES AND APPLICATIONS

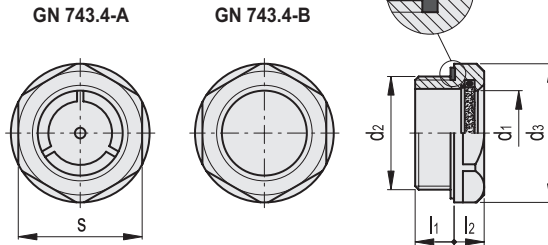
GN 743.4 oil level sight glasses can be used on pressurised oil tanks (oil-proof resistance data available on request).

ACCESSORIES ON REQUEST

Brass nuts with Gas threadings, type GH. (see page 1201) for fitting to reservoirs with wall thickness smaller than 5 mm.



| Conversion Table 1 mm = 0.039 inch | |
|---------------------------------------|------|
| d1 | |
| mm | inch |
| 11 | 0.05 |
| 14 | 0.55 |
| 18 | 0.71 |
| 24 | 0.94 |
| 32 | 1.26 |



GN 743.4-A

| Code | Description | d1 | d2 | d3 | l1 | l2 | s | △ |
|----------|-----------------------|----|---------|----|-----|-----|----|-----|
| GN.37842 | GN 743.4-11-M16X1,5-A | 11 | M16x1.5 | 22 | 8 | 7.5 | 20 | 19 |
| GN.37844 | GN 743.4-14-M20X1,5-A | 14 | M20x1.5 | 26 | 8.5 | 7.5 | 23 | 23 |
| GN.37846 | GN 743.4-18-M26X1,5-A | 18 | M26x1.5 | 32 | 9 | 8 | 30 | 41 |
| GN.37838 | GN 743.4-18-M27X1,5-A | 18 | M27x1.5 | 32 | 9 | 8 | 30 | 45 |
| GN.37848 | GN 743.4-24-M33X1,5-A | 24 | M33x1.5 | 40 | 11 | 8.5 | 36 | 64 |
| GN.37850 | GN 743.4-32-M42X1,5-A | 32 | M42x1.5 | 50 | 12 | 9 | 46 | 102 |
| GN.37851 | GN 743.4-32-M42X2-A | 32 | M42x2 | 50 | 12 | 9 | 46 | 110 |
| GN.37841 | GN 743.4-11-G3/8-A | 11 | G 3/8 | 22 | 8 | 7.5 | 20 | 19 |
| GN.37843 | GN 743.4-14-G1/2-A | 14 | G 1/2 | 26 | 8.5 | 7.5 | 23 | 23 |
| GN.37845 | GN 743.4-18-G3/4-A | 18 | G 3/4 | 32 | 9 | 8 | 30 | 41 |
| GN.37847 | GN 743.4-24-G1-A | 24 | G 1 | 40 | 11 | 8.5 | 36 | 64 |
| GN.37849 | GN 743.4-32-G1¼-A | 32 | G 1 1/4 | 50 | 12 | 9 | 46 | 102 |



GN 743.4-B

| Code | Description | d1 | d2 | d3 | l1 | l2 | s | △ |
|----------|-----------------------|----|---------|----|-----|-----|----|-----|
| GN.37548 | GN 743.4-11-M16x1.5-B | 11 | M16x1.5 | 22 | 8 | 7.5 | 20 | 19 |
| GN.37550 | GN 743.4-14-M20x1.5-B | 14 | M20x1.5 | 26 | 8.5 | 7.5 | 23 | 23 |
| GN.37552 | GN 743.4-18-M26x1.5-B | 18 | M26x1.5 | 32 | 9 | 8 | 30 | 41 |
| GN.37839 | GN 743.4-18-M27X1,5-B | 18 | M27x1.5 | 32 | 9 | 8 | 30 | 45 |
| GN.37554 | GN 743.4-24-M33x1.5-B | 24 | M33x1.5 | 40 | 11 | 8.5 | 36 | 64 |
| GN.37556 | GN 743.4-32-M42x1.5-B | 32 | M42x1.5 | 50 | 12 | 9 | 46 | 102 |
| GN.37852 | GN 743.4-32-M42X2-B | 32 | M42x2 | 50 | 12 | 9 | 46 | 110 |
| GN.37547 | GN 743.4-11-G3/8-B | 11 | G 3/8 | 22 | 8 | 7.5 | 20 | 19 |
| GN.37549 | GN 743.4-14-G1/2-B | 14 | G 1/2 | 26 | 8.5 | 7.5 | 23 | 23 |
| GN.37551 | GN 743.4-18-G3/4-B | 18 | G 3/4 | 32 | 9 | 8 | 30 | 41 |
| GN.37553 | GN 743.4-24-G1-B | 24 | G 1 | 40 | 11 | 8.5 | 36 | 64 |
| GN.37555 | GN 743.4-32-G1¼-B | 32 | G 1 1/4 | 50 | 12 | 9 | 46 | 102 |



Accessories for hydraulic systems